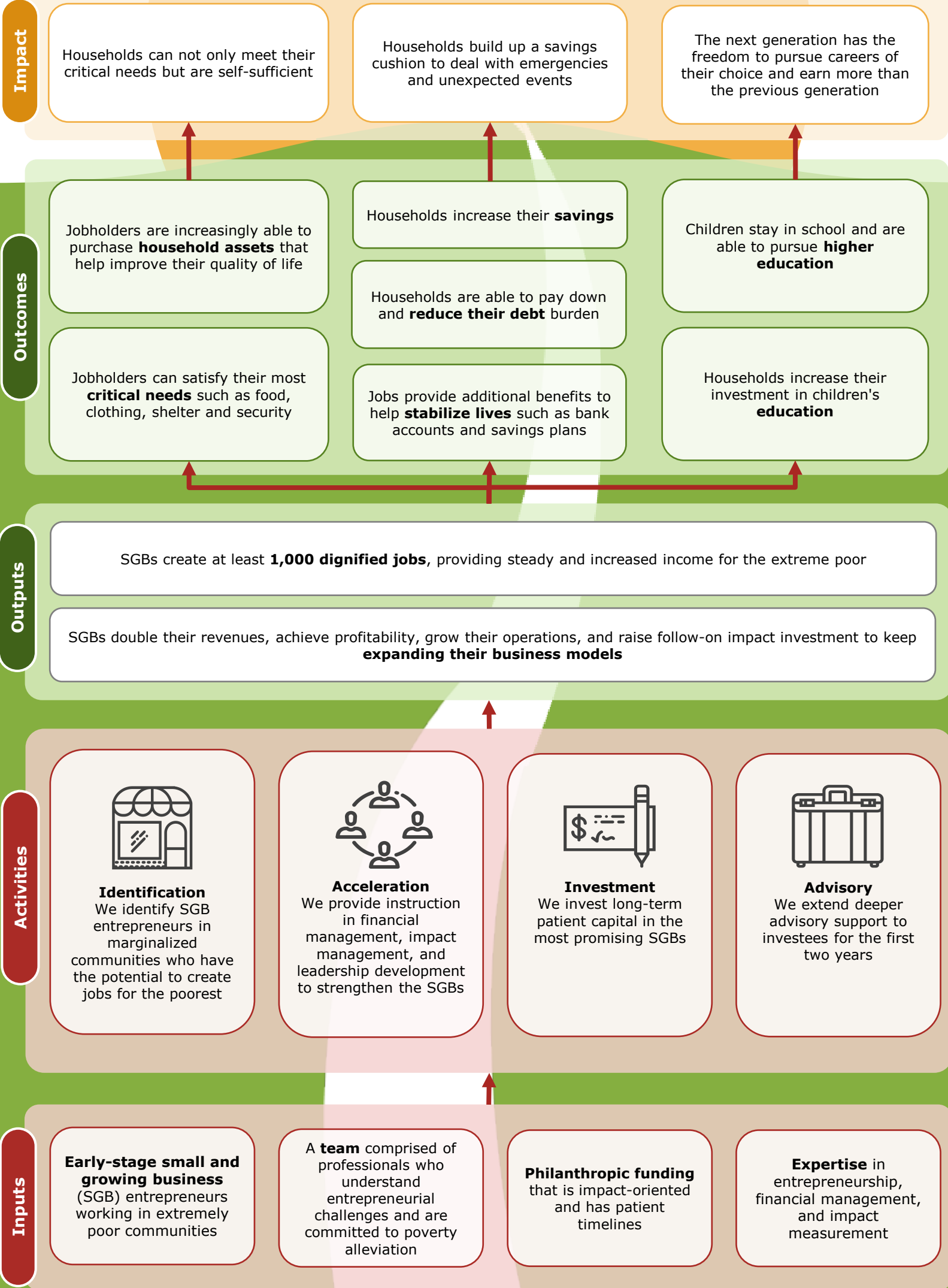


Our Theory of Change



Our Vision

We envision a world without extreme poverty, where people, households, and future generations have the resources to lead a fulfilled life -- not just survive but thrive -- and pursue their dreams.



Impact

Households can not only meet their critical needs but are self-sufficient

Households build up a savings cushion to deal with emergencies and unexpected events

The next generation has the freedom to pursue careers of their choice and earn more than the previous generation

Outcomes

Jobholders are increasingly able to purchase **household assets** that help improve their quality of life

Households increase their **savings**

Children stay in school and are able to pursue **higher education**

Jobholders can satisfy their most **critical needs** such as food, clothing, shelter and security

Households are able to pay down and **reduce their debt** burden

Jobs provide additional benefits to help **stabilize lives** such as bank accounts and savings plans

Households increase their investment in children's **education**

Outputs

SGBs create at least **1,000 dignified jobs**, providing steady and increased income for the extreme poor

SGBs double their revenues, achieve profitability, grow their operations, and raise follow-on impact investment to keep **expanding their business models**

Activities

Identification
We identify SGB entrepreneurs in marginalized communities who have the potential to create jobs for the poorest

Acceleration
We provide instruction in financial management, impact management, and leadership development to strengthen the SGBs

Investment
We invest long-term patient capital in the most promising SGBs

Advisory
We extend deeper advisory support to investees for the first two years

Inputs

Early-stage small and growing business (SGB) entrepreneurs working in extremely poor communities

A **team** comprised of professionals who understand entrepreneurial challenges and are committed to poverty alleviation

Philanthropic funding that is impact-oriented and has patient timelines

Expertise in entrepreneurship, financial management, and impact measurement